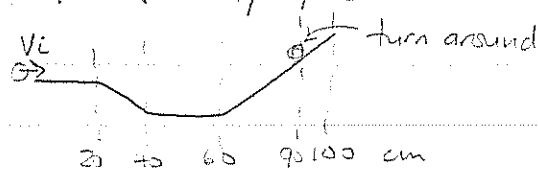


Physics 200B Assignment 2 9/5/08

1. Ch. 2 P 14 track



segments (A) (B) (C) (D)

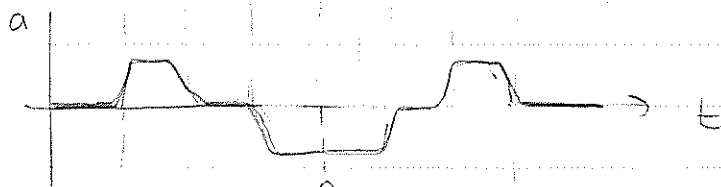
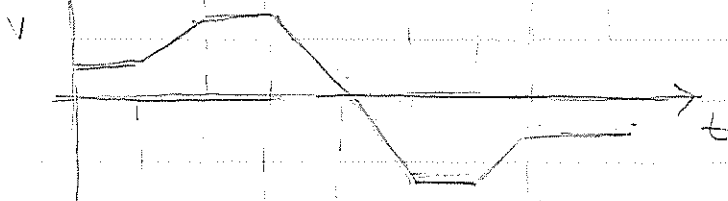
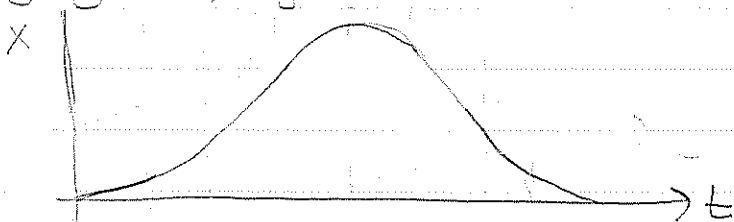
(A): constant v , so $a=0$ and $x=v_i t = \text{constant slope} > 0$

(B): constant a , so $v=v_i t$ (const slope) and $x=x_i + v_i t + \frac{1}{2} a t^2$ (parabola)
 > 0

(C): constant v

(D): constant $a < 0$ (looks like same magnitude as (B))

going back, signs of $a + v$ are reversed



↑ change direction

(A) (B) (C) (D) (C) (B) (A)