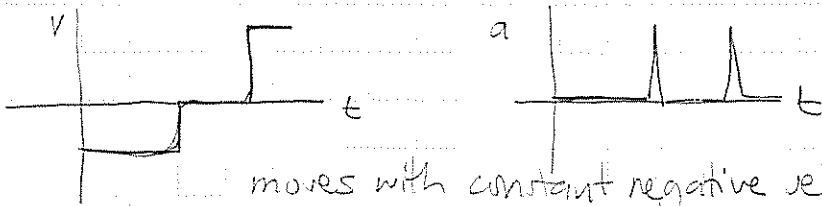


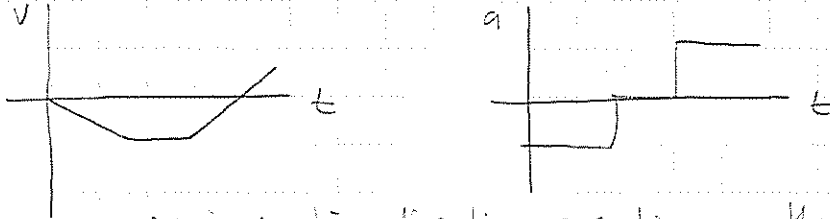
Exam 1 extra graphical review problem

1. a)



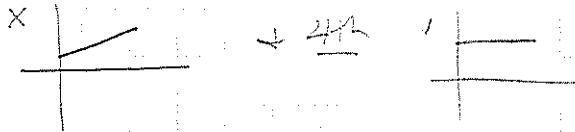
moves with constant negative velocity, stops suddenly, stays stopped, then quickly walks to origin in positive direction (opposite)

b)



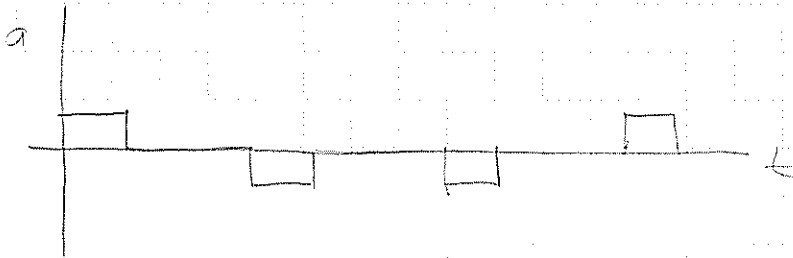
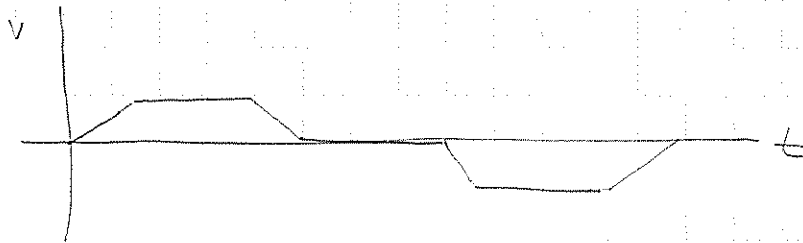
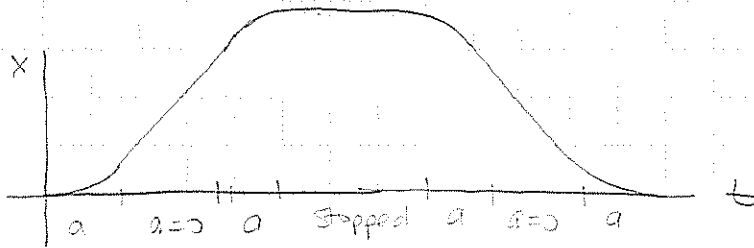
moves in negative direction speeding up, then moves with constant negative velocity, then slows down, turns around, and walks in the positive direction speeding up

2. 1st



indicate constant \vec{v}

3.



↻ reverses direction during time its stopped